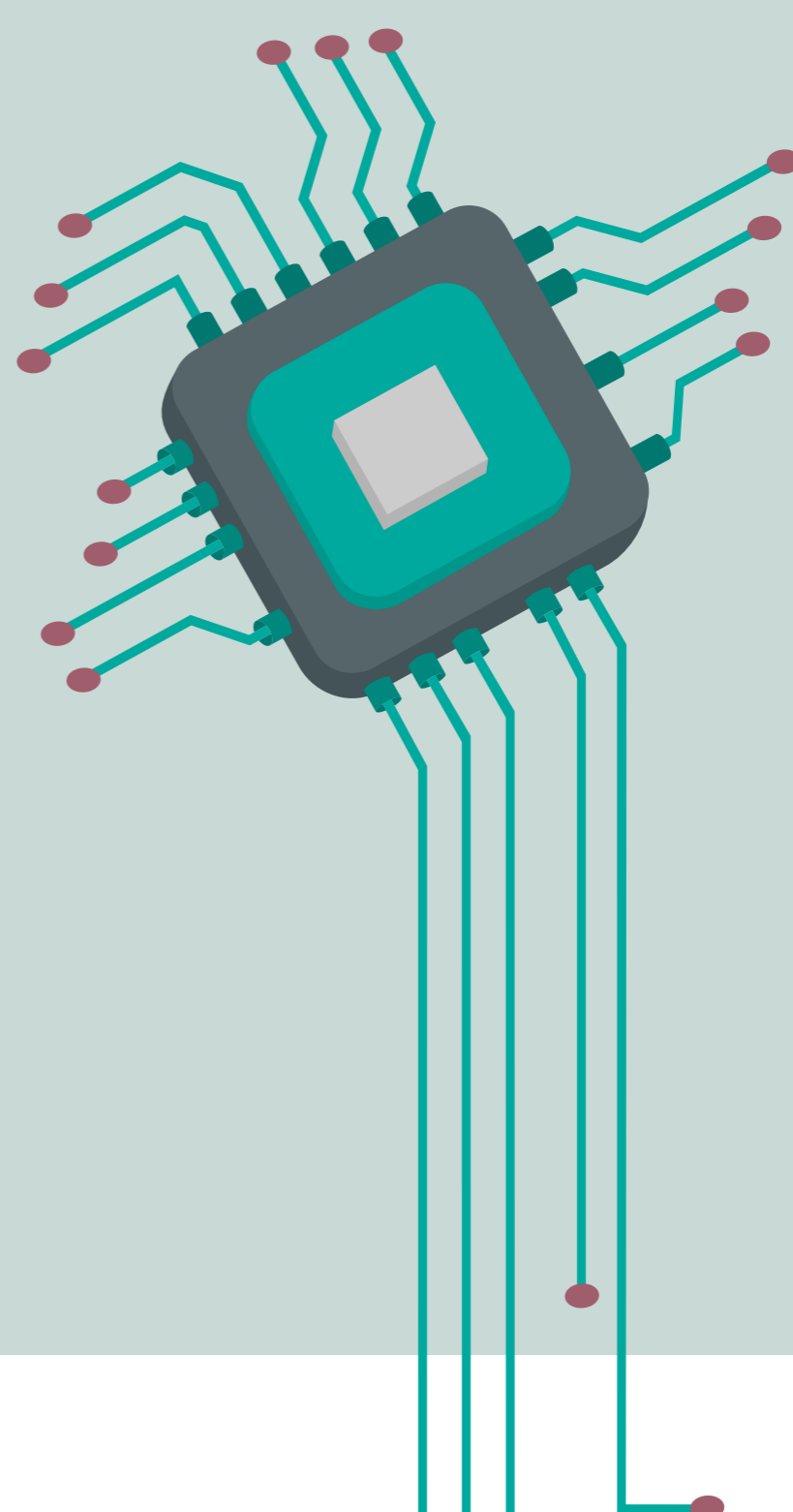


The new family of LTE goes the distance for IoT.

With the launch of LTE Cat-M1, Verizon lowers the barrier of entry to the Internet of Things (IoT) world, giving you more LTE options to reach your IoT goals.



Just right for IoT

Our LTE IoT solutions, including both LTE Cat-1 and LTE Cat-M1, scale down LTE to more efficiently support widespread IoT adoption.

LTE Cat-1

- Moderate data rates
- Low cost
- High bandwidth
- Full support for Voice over LTE (VoLTE)

LTE Cat-M1

- Slower data rates
- Lowest cost
- Narrow bandwidth
- Improved coverage
- Improved battery life



#1 for IoT

We're the first U.S. carrier to deploy LTE network services specifically for IoT.



Broader, more consistent coverage

Locations previously considered out of reach, such as basements, can now receive full LTE access.

- Improved nationwide coverage
- Deeper reach through walls, floors and in-ground



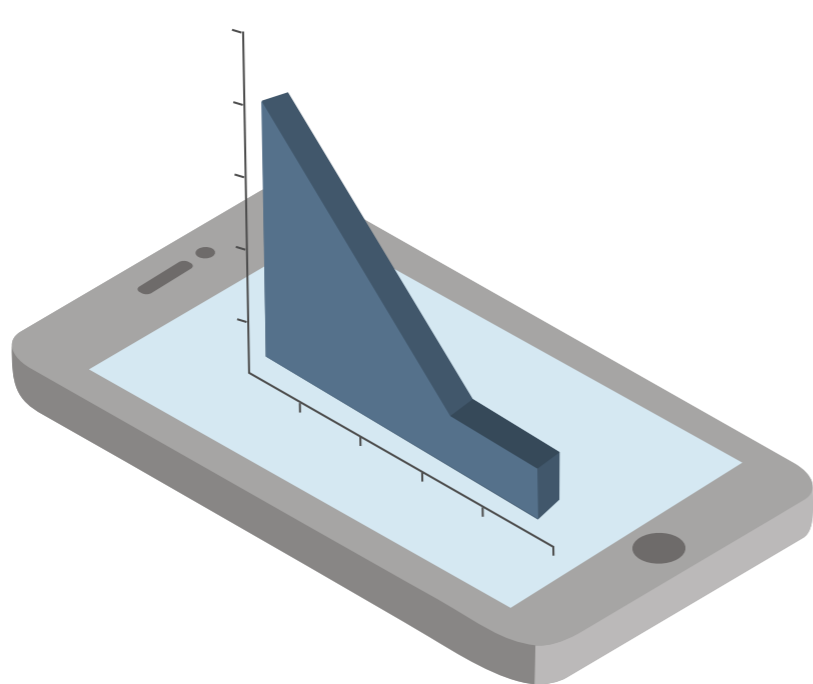
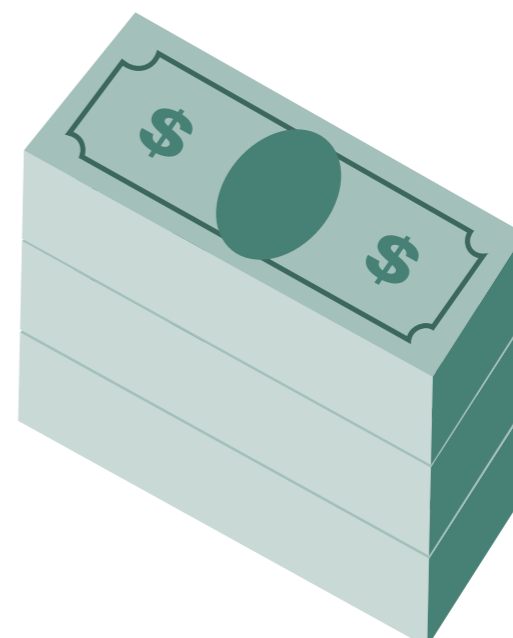
Longer battery life

Thanks to better power optimization, LTE Cat-M1 devices can check in less frequently and go into power-saving mode, allowing them to be left unattended for up to a decade.

Investment dollars go further

By evolving the device ecosystem to include LTE Cat-M1, Verizon offers the scale, coverage and security of LTE but at a much lower cost for IoT needs.

- Improved pricing relative to 2G/3G
- A simple transition from CDMA
- Minimized power consumption



Significantly lower

The cost savings for purchasing an LTE Cat-M1 device versus a Cat-4 or higher LTE device

Get the right technology for your business.

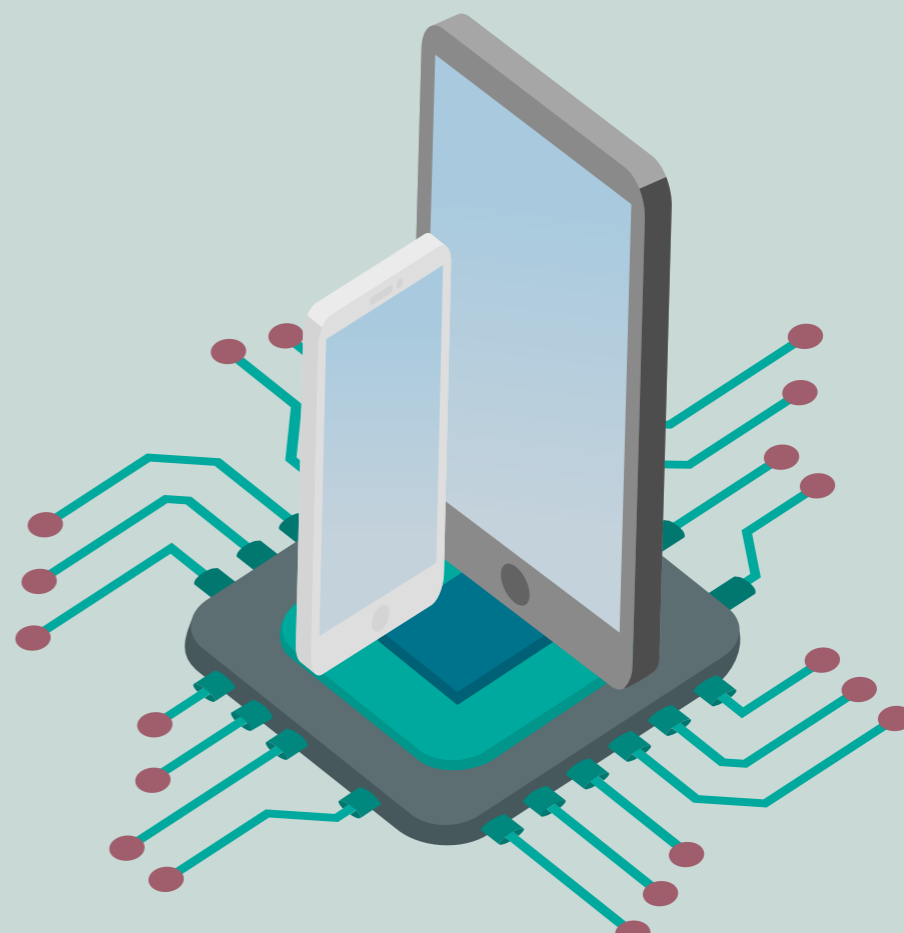
See how LTE Cat-1 and LTE Cat-M1 compare to the LTE used for a typical smartphone.

	Max speed (download)	Max speed (uplink)	Duplex	Antennas (#)	Relative device cost
Cat-4 <small>(e.g., typical smartphone)</small>	150 Mbps	50 Mbps	Full	2	NA
LTE Cat-1	10 Mbps	5 Mbps	Full	2¹	Similar to 3G
LTE Cat-M1	350 Kbps	350 Kbps	Half	1	Similar to 2G

Better matters.

We're the first U.S. carrier to deploy network services specifically for IoT and LTE Cat-M1 devices. Our LTE network is backed by a vast partner ecosystem and a streamlined certification process to get new IoT devices launched quickly.

Contact a Verizon representative to learn more or visit VerizonEnterprise.com/contact-us



1. Single antenna is available for non-mission critical and non-VoLTE applications. Network details & coverage maps at vzw.com. © 2017 Verizon.