



STATIC IP SET UP GUIDE

VERIZON D-LINK 2750B
&
ACTIONTEC GT784 WNV
WIRELESS GATEWAY

Verizon High Speed Internet
for Business

YOUR NEW STATIC IP CONNECTION AND SET UP

This Static IP Set Up Guide will instruct you how to set up your new Static IP Connection and Multiple Static IP addresses (if applicable). Static IP addresses have a dedicated IP address on the Internet while Dynamic IP addresses constantly change.

If you recently placed an order for Verizon's High Speed Internet Services for your business, you should have received an order confirmation email from Verizon. The email should contain your installation order number and new Static IP address(es) needed to set up your service.

It is very important that you confirm that your Order Status is complete before you begin to configure your Static IP connection. You can do this by going to the Verizon Whats Next website located at [verizon.com/whatsnext](https://www.verizon.com/whatsnext) and log in using your order number and service area zip code.

If a Verizon technician is scheduled to install your service you do not need to complete the steps in this Guide as the technician will set up your Static IP service for you. If you or your professional staff are setting up your Static IP address(es), this Set Up Guide will help you through step by step. If you still have questions or need assistance please call **1.888.649.9500**.

After you set up your Static IP address(es), open your browser and you should be directed to the Verizon Registration and Activation page. If you are not directed there automatically go to [activatemyhsi.verizon.net](https://www.verizon.com/activatemyhsi) to complete the Registration and Activation process. This process must be completed before you can use your service.

After you set up your Static IP address(es) and completed the Activation and Registration process open a new browser and go to [verizon.com/mybusiness](https://www.verizon.com/mybusiness) to get started. Here you can learn about Verizon email, web hosting and additional services and support for your Verizon High Speed Internet service. At Verizon we value you as a customer and appreciate your business.

SETTING UP YOUR VERIZON HIGH SPEED INTERNET FOR BUSINESS STATIC IP CONNECTION

SECTION 1

D-LINK 2750B WIRELESS GATEWAY

ACCESSING THE D-LINK GUI INTERFACE	Pages 3-5
CONFIGURING SINGLE STATIC IP	Pages 6-9
BRIDGE MODE CONFIGURATION.....	Pages 10-12
WIRELESS CONNECTION	Page 13

SECTION 2

ACTIONTEC GT784 WNV

ACCESSING THE ACTIONTEC GUI INTERFACE.....	Pages 14-15
CONFIGURING SINGLE STATIC IP	Pages 16-20
BRIDGE MODE CONFIGURATION.....	Pages 21-25
WIRELESS CONNECTION	Page 26

SECTION 3

OPERATING SYSTEM CONFIGURATION

WINDOWS® XP	Pages 27-31
WINDOWS VISTA®	Pages 32-35
WINDOWS 7	Pages 36-47
MAC® OS X (10.4).....	Pages 48-49
MAC® OS X (10.5).....	Pages 50-52

SECTION 4

TROUBLESHOOTING:

IF THE CONNECTION IS NOT WORKING.....	Page 53
---------------------------------------	---------

NEED HELP? Call our Business Support Team at 1.888.649.9500

SECTION 1

ACCESSING THE D-LINK GUI INTERFACE

Step 1 Login: To get to the D-Link Gateway interface, enter in the browser address line: `http://192.168.1.1`



Step 2 The “Home Overview” screen will appear. (You will not be prompted to enter a password on this screen or have full view of all features until visiting the “Settings” tab)

- Click on the “Settings” tab



Step 3 The “Settings” tab will appear (Example 1)

- Enter the User Name: admin
- Enter your Personal Password located on sticker on bottom of the modem (Example 2)

Example 1



Example 2

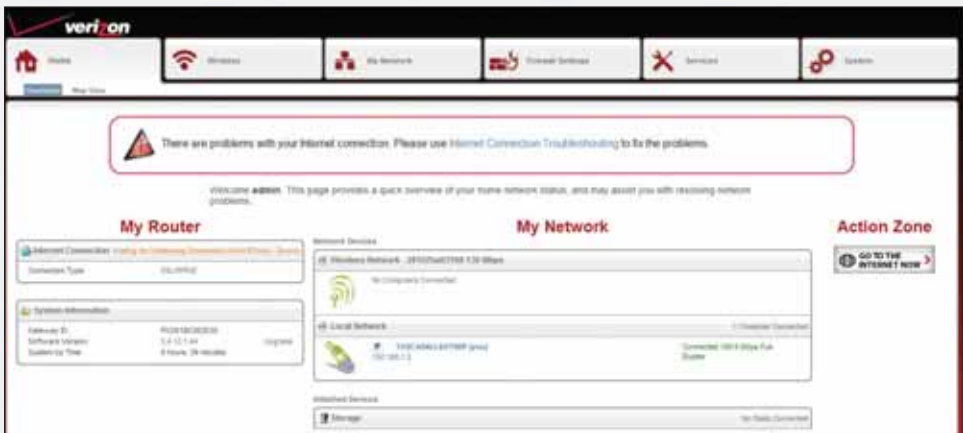


Step 4 Click “Continue”

NEED HELP? Call our Business Support Team at 1.888.649.9500

Verizon High Speed Internet for Business

Step 5 The “Home Overview” screen will appear again, with all options now available



SECTION 1 (con't)

CONFIGURING SINGLE STATIC IP

After logging into the GUI interface (see page 3)

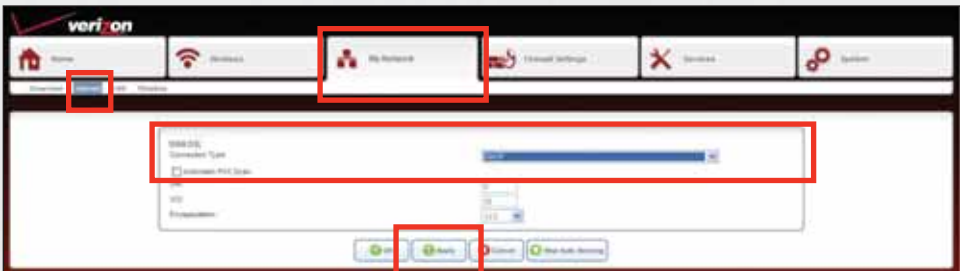
Step 1 Click on “My Network” tab

Step 2 The “My Network” tab is displayed

Step 3 Click on “Internet” in the sub menu

Step 4 Change the “WAN DSL Connection Type” drop down to “DHCP”

Step 5 Click “Apply”



Verizon High Speed Internet for Business

Step 6 After clicking on “Apply” you are returned to the “My Network” screen

Step 7 Click on the “System” tab



Step 8 The System screen will display

Step 9 Click on “Network Connections” in the sub menu

Step 10 Click on “WAN ETHoA”



Step 11 The “Network Connections” are displayed

Step 12 Click on “Settings” tab in the sub menu

Step 13 Locate the “Internet Protocol” Section and change the drop down to “Use the Following IP Address”

Step 14 Populate the following information provided by Verizon

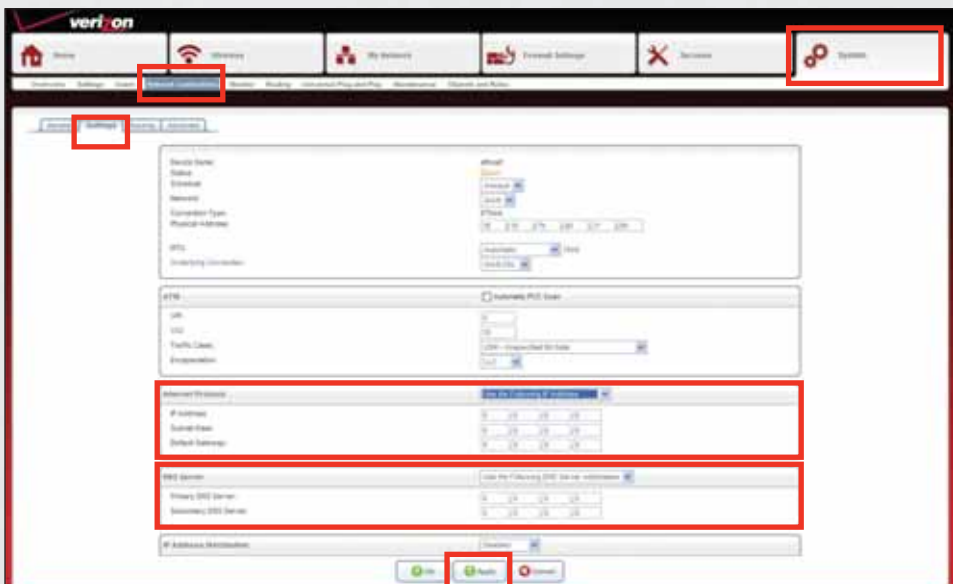
- IP Address
- Subnet Mask
- Default Gateway

Step 15 Change the “DNS Server” drop down to “Use the following DNS Server Addresses”

Step 16 Populate the:

- Primary DNS Server
- Secondary DNS Server

Step 17 Click “Apply”



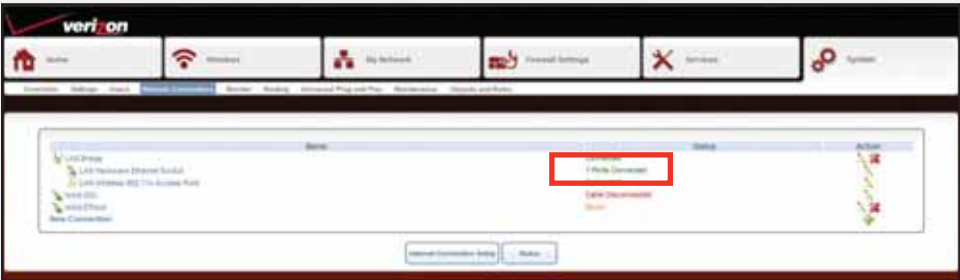
NEED HELP? Call our Business Support Team at 1.888.649.9500

Verizon High Speed Internet for Business

Step 18 After clicking “Apply” you are returned to the “System” screen

Step 19 The Status will now show connected

Step 20 This completes the Single Static IP setup



SECTION 1 (con't)

D-LINK 2750B BRIDGE MODE CONFIGURATION

After Logging into the GUI Interface

Step 1 The “Home” page will appear

Step 2 Click on the “Wireless” tab



The wireless “General” tab will appear

Step 3 Click on “Disable”



NEED HELP? Call our Business Support Team at 1.888.649.9500

Verizon High Speed Internet for Business

Step 4 The wireless “General” tab will appear again now displaying “Enable”

Step 5 Click on the “My Network” tab



The “My Network” tab will appear

Step 6 Click on the “Internet” tab located in the sub menu

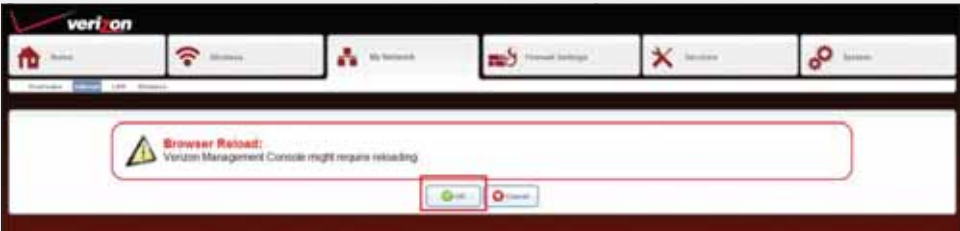
Step 7 From the drop down menu change the “WAN DSL Connection Type” to: LAN-WAN Bridged Ethernet Connection Over ATM (Bridged EThoA)

Step 8 Click “Apply”



The Warning screen will appear

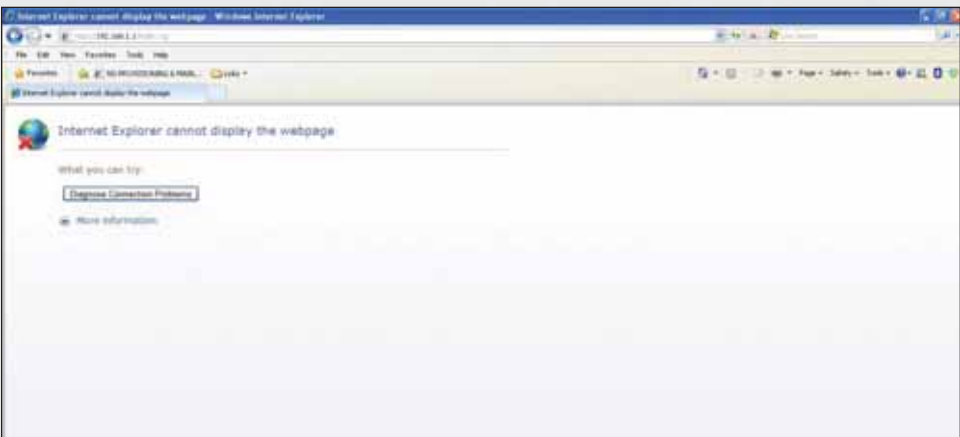
Step 9 Click “OK”



Internet Explored (IE) will display “Internet Explorer cannot display the webpage”

Step 10 Power off the D-Link and wait approximately 30 seconds before turning back on

Note to restore full router and wireless functionality hold the reset down on the back of the gateway for 30 to 45 seconds



SECTION 1 (con't)

WIRELESS CONNECTION – INFORMATION NEEDED FOR SETTING UP YOUR WIRELESS CONNECTION TO YOUR NEW 802.11N WIRELESS GATEWAY

Step 1 When setting up a wireless connection there is certain information that you will need to know:

- The D-Link 2750B is a 802.11N capable wireless Gateway and is backward compatible with 802.11B and G
- The D-Link 2750B is preconfigured with WPA/WPA2 wireless security enabled
- All wireless devices must support WPA/WPA2 in order to connect
- If all wireless devices do not support WPA/WPA2 it is recommended that the wireless devices be upgraded
- If the wireless devices cannot be upgraded the wireless security within the D-Link must be manually configured in order to connect this device to the less secure WEP wireless security
- WEP does not support all of the 802.11N features/benefits such as the higher wireless connection speeds.
- The SSID/MAC and WPA Security Key needed to establish a connection are located on a sticker on the bottom of the D-Link (see example below)

- Locate the SSID/MAC in your available networks
- When prompted, enter the WPA Key with no spaces and all letters capitalized

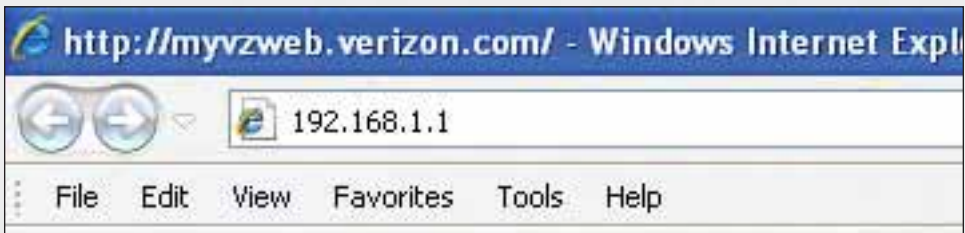


Example

SECTION 2

ACCESSING YOUR VERIZON ACTIONTEC GT784 WNV WIRELESS MODEM ROUTER WITH A SINGLE STATIC IP

Step 1 Login: To get to the Actiontec Gateway interface, enter in the browser address line: `http://192.168.1.1`



Step 2 The “Login” screen will appear

- Enter the username admin (all lower case) in the “New Username” field (or change username if desired).
- Enter a new password in the “New Password” field
- Enter the same password again in the “Re-Type New Password” field

Make sure to write the username and password down on a piece of paper and keep it in a safe place for future reference.

Step 3 Select your local time zone from the “Time Zone” drop-down list

Step 4 Click “Apply”

Verizon High Speed Internet for Business

verizon

Firmware Version: GT784WN VZ: 1.1.5 GT784WNV

Login Setup

Step 1.

We now require you to change your default login User Name and Password. Please select a new login User Name and Password and type it into the appropriate fields below.

NOTE: The password must be at least 6 characters long and include at least one alpha numeric character. The password cannot begin with characters such as " ! @ # \$ % ^ & *".

New Username: admin

New Password:

Re-Type New Password:

Step 2.

Please select your appropriate Time Zone and click **Apply**.

Time Zone: Eastern_Time (GMT-05:00)

Apply

Copyright © 2011 Acortec Inc. All Rights Reserved

Step 5 After the changes are applied, the enter password screen will appear. Enter the User Name and new Password just created to access the GUI.

Step 6 Click "OK"

Connect to 192.168.1.1

The server 192.168.1.1 at Before configuring the Gateway, a User Name / Password is required. If you do not know the User Name / Password please refer to the User manual for further support. requires a username and password.

Warning: This server is requesting that your username and password be sent in an insecure manner (basic authentication without a secure connection).

User name:

Password:

Remember my password

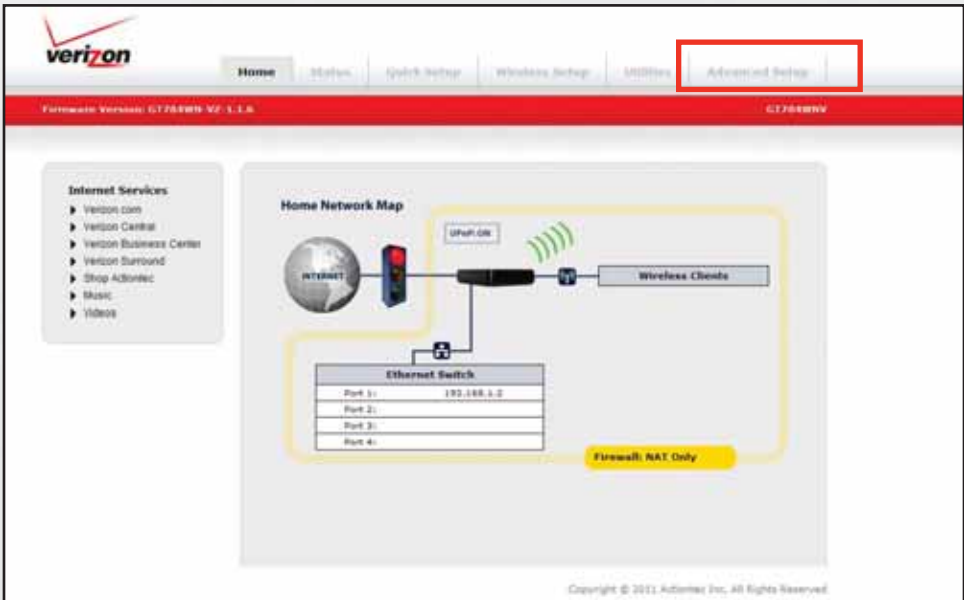
OK Cancel

SECTION 2 (con't)

CONFIGURING YOUR VERIZON ACTIONTEC GT784 WNV WIRELESS MODEM ROUTER WITH A SINGLE STATIC IP

Step 1 After logging into the GUI Interface the Gateway's Home screen will appear.

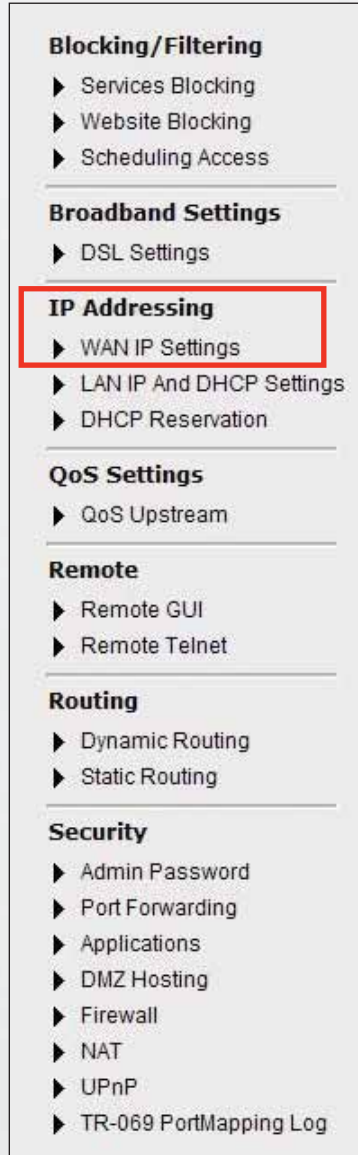
Click on the "Advanced Setup" tab located at the top right of the screen



Verizon High Speed Internet for Business

Step 2 The first “Advanced Setup” screen will appear.

Under “IP Addressing” click on
“WAN IP Settings”



The screenshot shows a list of settings categories and options. The 'IP Addressing' category is highlighted with a red box, and the 'WAN IP Settings' option within it is also highlighted with a red box.

- Blocking/Filtering**
 - ▶ Services Blocking
 - ▶ Website Blocking
 - ▶ Scheduling Access
- Broadband Settings**
 - ▶ DSL Settings
- IP Addressing**
 - ▶ WAN IP Settings
 - ▶ LAN IP And DHCP Settings
 - ▶ DHCP Reservation
- QoS Settings**
 - ▶ QoS Upstream
- Remote**
 - ▶ Remote GUI
 - ▶ Remote Telnet
- Routing**
 - ▶ Dynamic Routing
 - ▶ Static Routing
- Security**
 - ▶ Admin Password
 - ▶ Port Forwarding
 - ▶ Applications
 - ▶ DMZ Hosting
 - ▶ Firewall
 - ▶ NAT
 - ▶ UPnP
 - ▶ TR-069 PortMapping Log

Step 3 The “WAN IP Settings” screen will appear

Option 1: Under Select the ISP protocol below click on:

- RFC 1483 via Static IP

Step 4 Single Static IP Address Configuration:

Option 2: Under “Select the IP Type”, Enter:

- The First Static IP address
- The Subnet Mask
- The Default Gateway address

Step 5 Option 3: Under “Select the DNS Type”:

- Click on radio button next to “Static DNS Addresses”
- Enter the Primary DNS and Secondary DNS in the appropriate fields

Step 6 Option 4: Under “Configure IGMP Proxy”:

- Select Disabled

Step 7 Option 5: Click “Apply” to save your changes

Verizon High Speed Internet for Business

verizon

Home | Status | Quick Setup | Wireless Setup | Utilities | **Advanced Setup**

Firmware Version: GT784WN V2-1.1.7 GT784WNV

Blocking/Filtering

- Services Blocking
- Website Blocking
- Scheduling Access

Broadband Settings

- DSL Settings

IP Addressing

- WAN IP Settings
- LAN IP And DHCP Settings
- DHCP Reservation

QoS Settings

- QoS Upstream

Remote

- Remote GUI
- Remote Telnet

Routing

- Dynamic Routing
- Static Routing

Security

- Admin Password
- Port Forwarding
- Applications
- DMZ Hosting
- Firewall
- NAT
- UPnP
- TR-069 PortMapping Log

WAN IP Settings

WAN IP Addressing sets the protocol used by your ISP for Internet access.

1. Select the ISP protocol below.

- PPPoE
- RFC 1483 Transparent Bridging
- RFC 1483 via DHCP
- RFC 1483 via Static IP

2. Select the IP Type.

IP:

Subnet Mask:

Default Gateway Address:

Multiple Static IP Addresses

Gateway Address:

Subnet Mask:

Enable Public/Private IP Addressing

3. Select the DNS type.

- Dynamic DNS Address(Default)
- Static DNS Address

Primary DNS:

Secondary DNS:

4. Configure IGMP Proxy.

- Enable
- Disable

5. Click "Apply" to save your changes.

Step 8 A confirmation screen is displayed while the gateway applies the new settings.

Thank You!

Please wait while we apply the new settings to your modem.

After new settings are applied successfully, we'll take you back to the page where the selection was made.

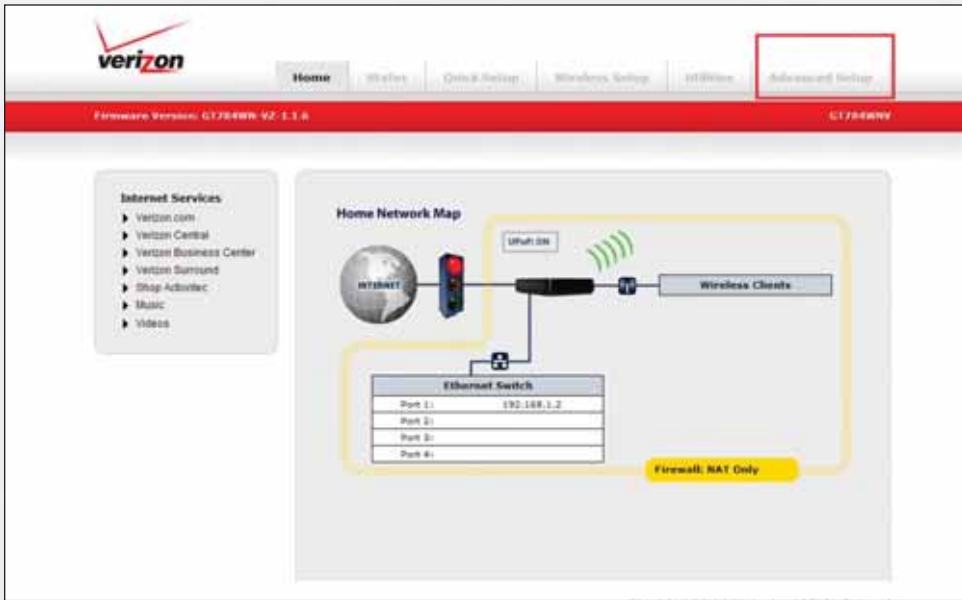
Step 9 You are now returned to the “WAN IP Settings” page. The configuration should now be set for Static IP.

SECTION 2 (con't)

ACTIONTEC GT784 WMV BRIDGE MODE CONFIGURATION

After logging into the GUI interface the Home Page will appear

Step 1 From the Home Page, click on “Advanced Setup” screen



The Advanced Setup screen will appear

Step 2 Under “IP Addressing”, click on “WAN IP Setting”

The screenshot shows the 'Advanced Setup' interface for the Actiontec GT784 WNV. The top navigation bar includes 'Home', 'Status', 'Quick Setup', 'Wireless Setup', 'Utilities', and 'Advanced Setup' (highlighted with a red box). The left sidebar contains various configuration categories, with 'IP Addressing' and its sub-item 'WAN IP Settings' highlighted with a red box. The main content area is titled 'Services Blocking' and includes instructions for selecting a device, choosing services to block (Web, FTP, Newsgroups, E-mail), and an 'Apply' button. Below the instructions is a 'Service Blocking List' table.

DEVICE NAME	IP ADDRESS	Service Blocked	EDIT
No Entries Defined			

Copyright © 2011 Actiontec Inc. All Rights Reserved.

Verizon High Speed Internet for Business

The “WAN IP Settings” screen will appear

Step 3 Click on radio button next to “RCF 1483 Transparent Bridging”

Step 4 Click “Apply”

Firmware Version: G7Z84WV V2 G7Z84WV

Blocking/Filtering

- ▶ Services Blocking
- ▶ Website Blocking
- ▶ Scheduling Access

Broadband Settings

- ▶ DSL Settings

IP Addressing

- ▶ WAN IP Settings
- ▶ LAN IP And DHCP Settings
- ▶ DHCP Reservation

QoS Settings

- ▶ QoS Upstream

Remote

- ▶ Remote GUI
- ▶ Remote Telnet

Routing

- ▶ Dynamic Routing
- ▶ Static Routing

Security

- ▶ Admin Password
- ▶ Port Forwarding
- ▶ Applications
- ▶ DMZ Hosting
- ▶ Firewall
- ▶ NAT
- ▶ UPnP
- ▶ TR-069 Firmware Log

WAN IP Settings

WAN IP Addressing sets the protocol used by your ISP for Internet access.

1. Select the ISP protocol below.

PPPoE

RCF 1483 Transparent Bridging

RCF 1483 via DHCP

RCF 1483 via Static IP

2. Enter your PPP username and password.

PPP Username:

PPP Password:

My ISP does not require a username and password.

3. Select the IP Type.

Dynamic IP-DHCP(Default)

Single Static IP Address

Single Static IP

Multiple Static IP Addresses

Gateway Address

Subnet Mask

Enable Public/Private IP Addressing

4. Select the DNS type.

Dynamic DNS Address(Default)

Static DNS Addresses

Primary DNS:

Secondary DNS:

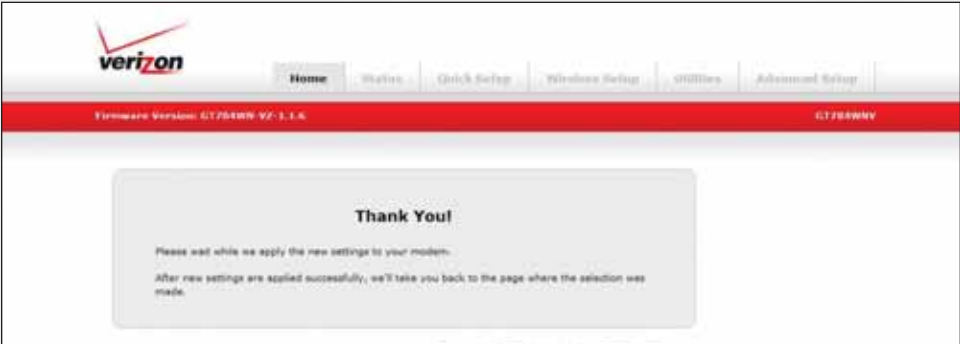
5. Configure IGMP Proxy.

Enable

Disable

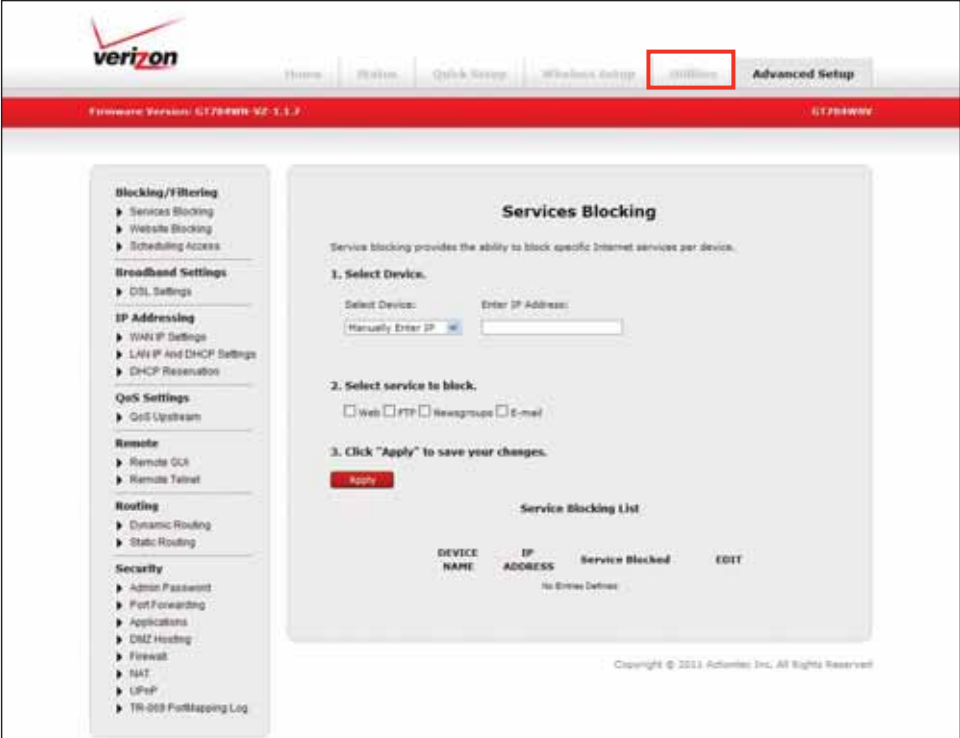
6. Click "Apply" to save your changes.

Step 5 The Thank You page will appear



The “Advanced Setup” screen will appear

Step 6 Click on “Utilities” tab

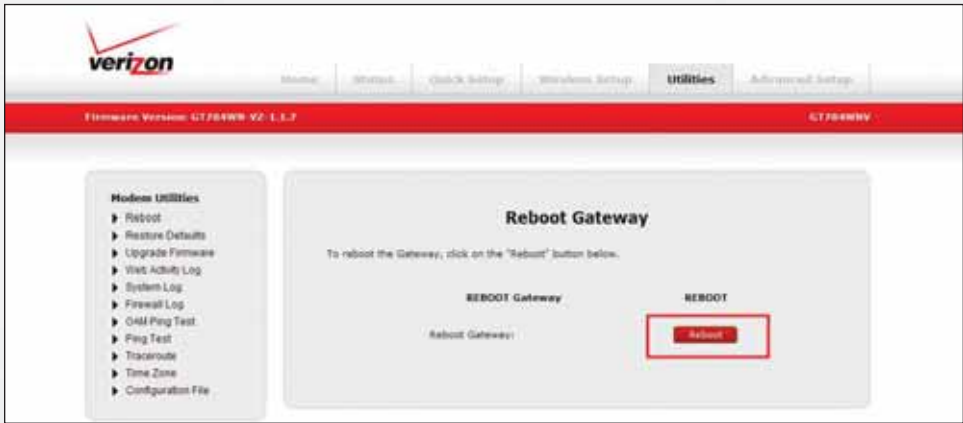


NEED HELP? Call our Business Support Team at 1.888.649.9500

Verizon High Speed Internet for Business

The “Utilities Reboot Gateway” screen will appear

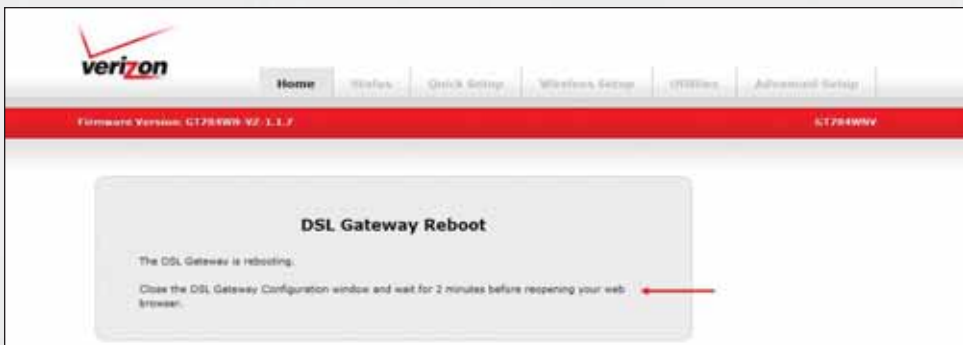
Step 7 Click on “Reboot”



Step 8 The “DSL Gateway Reboot” warning screen will appear

Step 9 Close the gateway configuration browser window

Step 10 Wait 2 minutes before opening the web browser window



SECTION 2 (con't)

WIRELESS CONNECTION – INFORMATION NEEDED FOR SETTING UP YOUR WIRELESS CONNECTION TO YOUR NEW 802.11N WIRELESS GATEWAY

Step 1 When setting up a wireless connection there is certain information that you will need to know:

- The Actiontec GT784 is a 802.11N capable wireless Gateway and is backward compatible with 802.11B and G
- The Actiontec GT784 is preconfigured with WPA/WPA2 wireless security enabled
- All wireless devices must support WPA/WPA2 in order to connect
- If all wireless devices do not support WPA/WPA2 it is recommended that the wireless devices be upgraded
- If the wireless devices cannot be upgraded in order to connect this device the wireless security within the Actiontec must be manually configured to the less secure WEP wireless security
- WEP does not support all of the 802.11N features/benefits such as the higher wireless connection speeds
- The Network name and WPA security key/passphrase needed to establish a connection are located on a sticker on the bottom of the Actiontec (see example below)
 - Locate the Network Name (SSID) in your available networks
 - When prompted, enter the Key/Passphrase with no spaces and all letters capitalized



NEED HELP? Call our Business Support Team at 1.888.649.9500

SECTION 3

WINDOWS® XP OPERATING SYSTEM CONFIGURATION

Step 1 Click the “Start” button. Then click on “My Computer”.



Step 2 Click on the “My Network Places” icon.



Step 3 Click on “View Network Connections”.



NEED HELP? Call our Business Support Team at 1.888.649.9500

Verizon High Speed Internet for Business

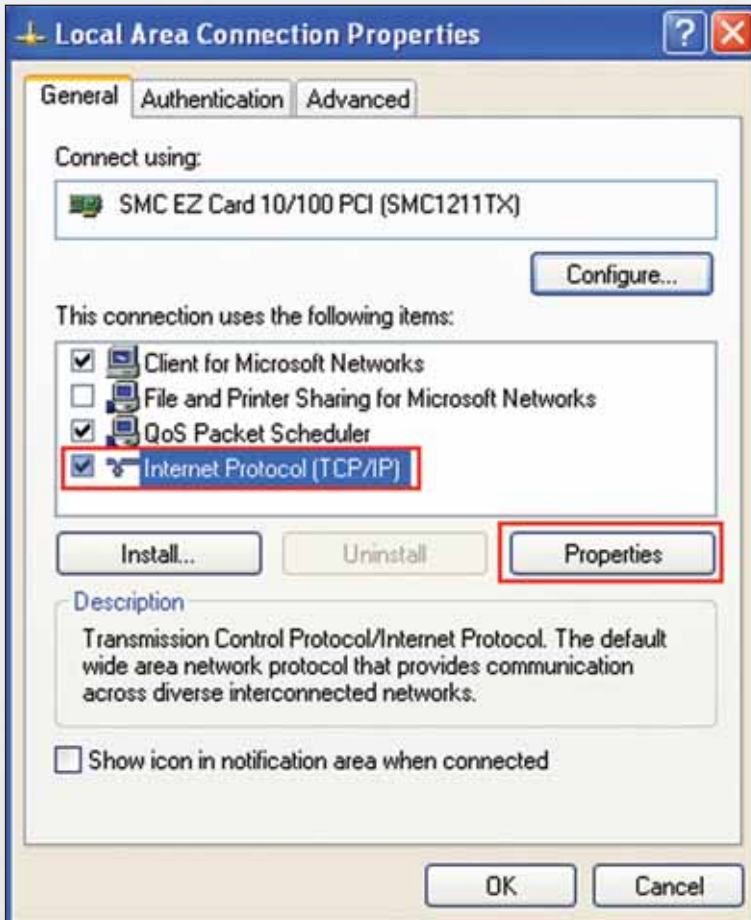
Step 4 If the LAN Connection is enabled, go to step 5.

Note: If LAN Connections is disabled, then right click on “Local Area Connection” icon and click on “Enable”.

Step 5 Right click on “Local Area Connection” then click on “Properties”.



- Step 6** The Local Area Connection Properties window should open. Click on “Internet Protocol (TCP/IP)” to highlight it then click on “Properties”.



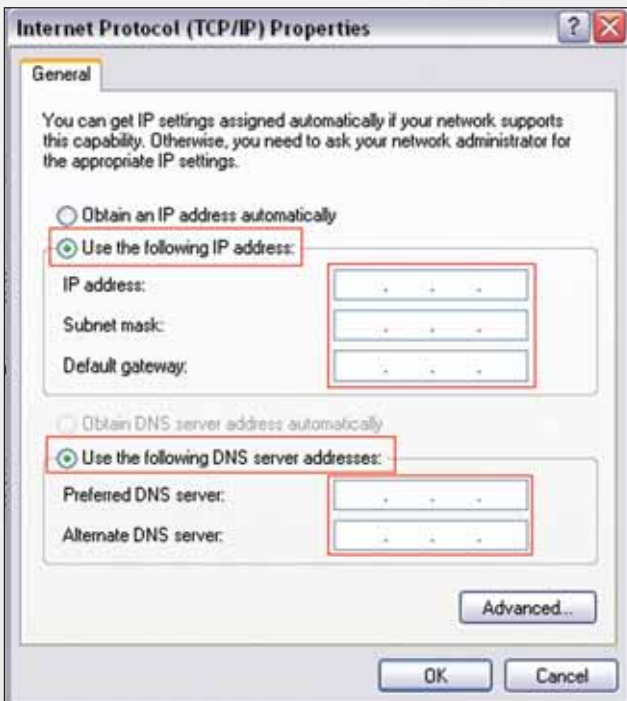
Verizon High Speed Internet for Business

Step 7 Click on the “General” tab and select Use the following IP Address. Enter the IP address Subnet Mask and Default gateway address (found in your Verizon Service Activation Email). Go down to “Use the Following DNS Server” section.

Click on Preferred DNS server textbox and enter the DNS 1 address (found in your Verizon Service Activation Email).

Then click on Alternate DNS server textbox and enter DNS 2 address (found in your Verizon Service Activation Email).

Click “OK” at the Internet Protocol (TCP/IP) window.



Click “OK” at the Local Area Connection properties window.

Step 8 Please restart your computer to apply new settings.

Step 9 Open the browser and test your Internet connection by going to **verizon.com/mybusiness** to learn about Verizon email, web hosting and where to get additional Verizon High Speed Internet support.

SECTION 3 (con't)

WINDOWS® VISTA OPERATING SYSTEM CONFIGURATION

Step 1 Click the “Start” button.



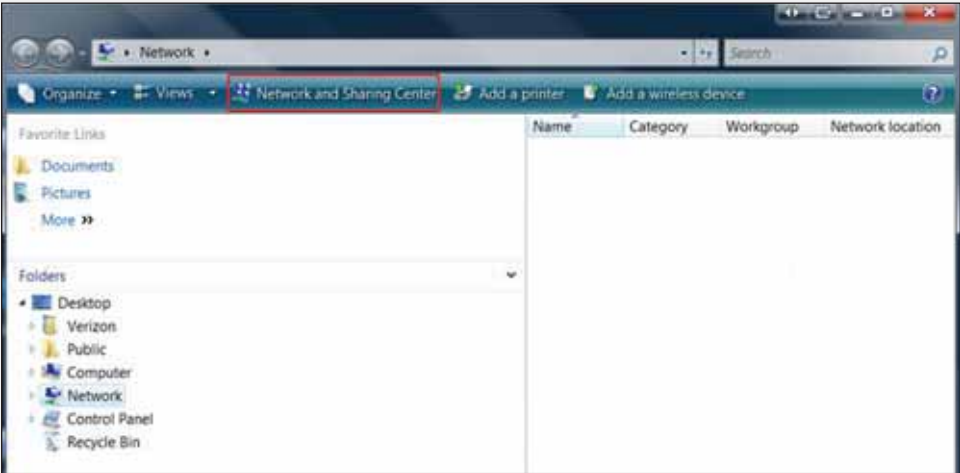
Step 2 Click on “Network”.



NEED HELP? Call our Business Support Team at 1.888.649.9500

Verizon High Speed Internet for Business

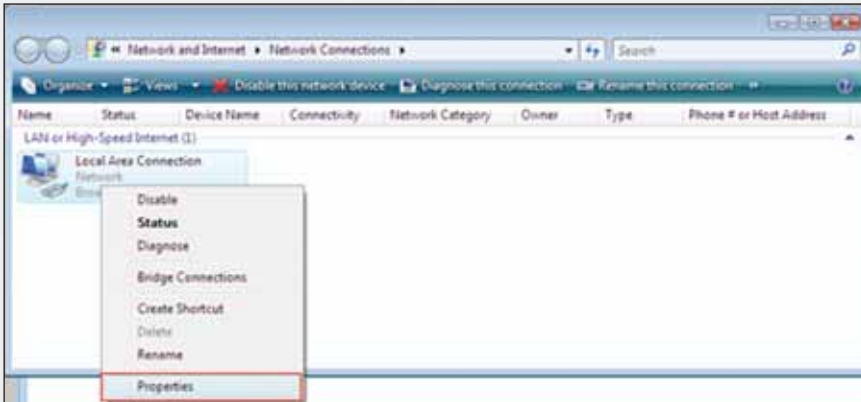
Step 3 Click “Network and Share Center”.



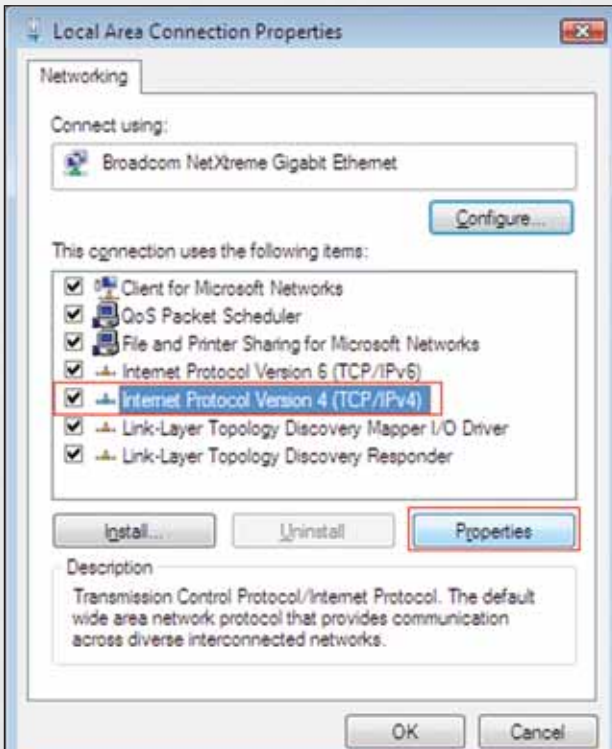
Step 4 Click “Manage network connections” from the left menu.



Step 5 Right-click “Local Area Connection” and click “Properties”.



Step 6 Select Internet Protocol Version 4 (TCP/IPv4) and click “Properties”.

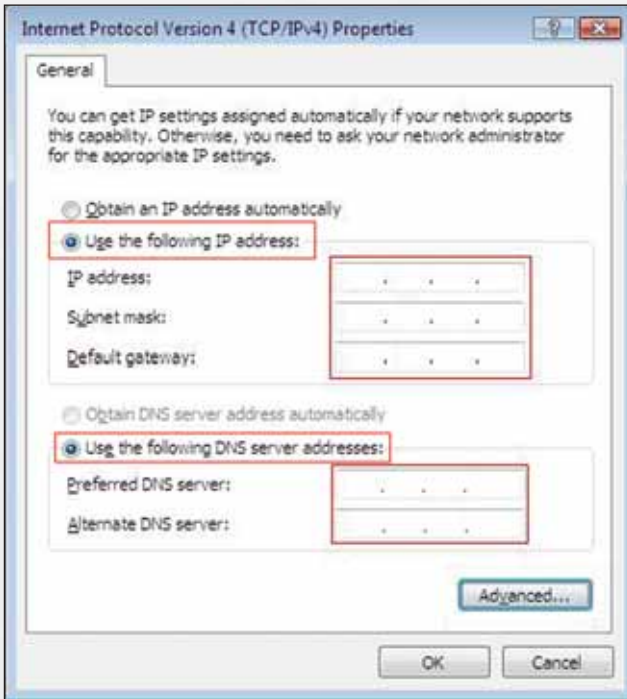


Verizon High Speed Internet for Business

Step 7 Enter the IP address Subnet Mask and Default gateway address (found in your Verizon Service Activation Email). Go down to “Use the Following DNS Server” section.

Click on Preferred DNS server textbox and enter the DNS 1 address (found in your Verizon Service Activation Email).

Then click on Alternate DNS server textbox and enter DNS 2 address (found in your Verizon Service Activation Email).



Click “OK” at the Internet Protocol (TCP/IP) window.

Click “Close” at the Local Area Connection properties window.

Step 8 On the Network Connections Window, click on “File” then “Close”.

Step 9 Please restart your computer to apply new settings.

Step 10 Open the browser and test your Internet connection by going to **verizon.com/mybusiness** to learn about Verizon email, web hosting and where to get additional Verizon High Speed Internet support.

SECTION 3 (con't)

WINDOWS® 7 OPERATING SYSTEM CONFIGURATION

Note: The steps in this section will show you how to Configure the Network Card for a Static IP in Windows 7 using the Start Menu.

Step 1 Click on the Windows Orb in the taskbar or press the Windows Key on your keyboard.
Click on “Network”.



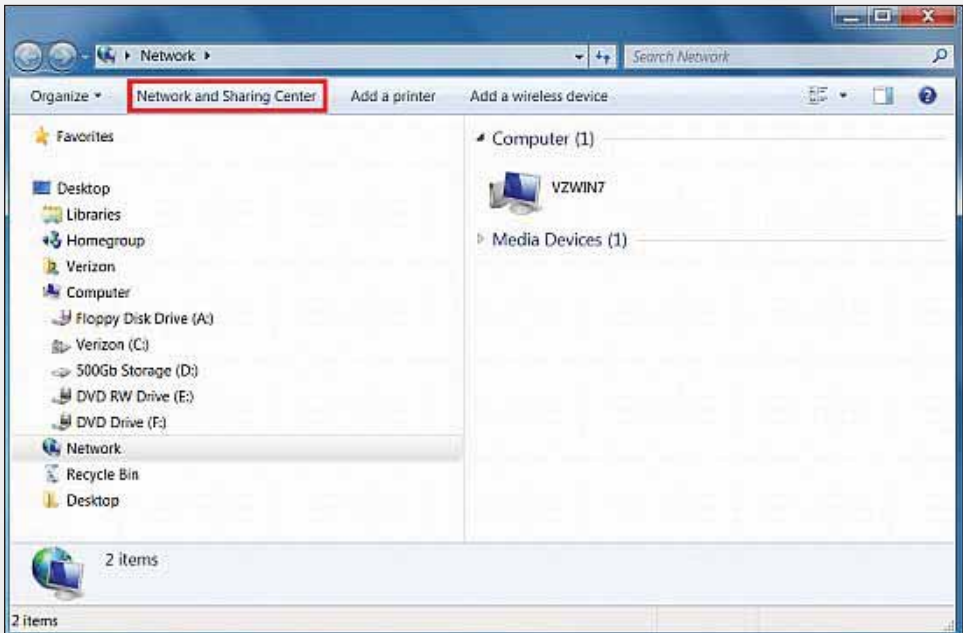
Verizon High Speed Internet for Business

Step 2 The Network window is displayed.

Click “Network and Sharing Center” in the top navigation menu.

Additional Information - If you are not connected to a network either wired or wirelessly, you will not see any other connected computers in this display.

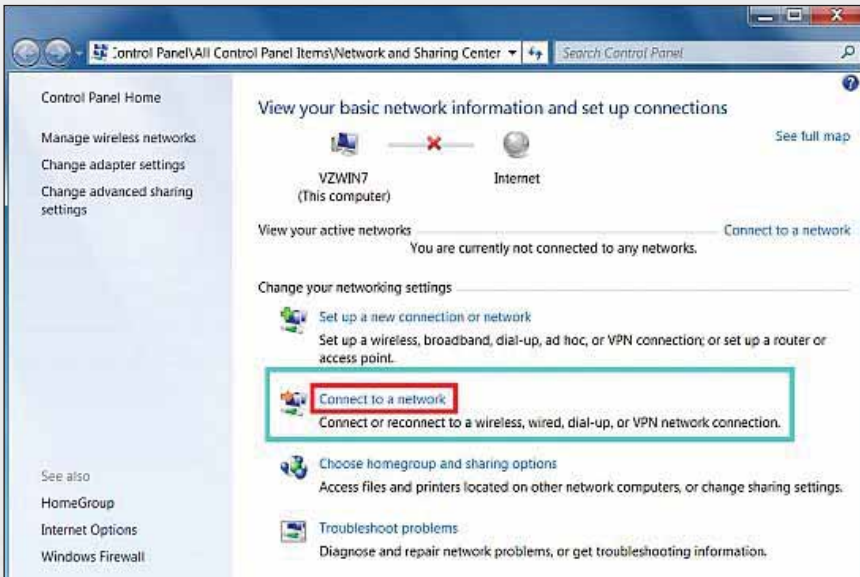
This is a good indicator that you are not connected to a network.



The Network and Sharing Center is displayed.

Click on the “Connect to a network” option in the list of options below the network image.

Additional Information - Note that the network image shows a red X between the computer and the Internet icon. This indicates no connection to the Internet.

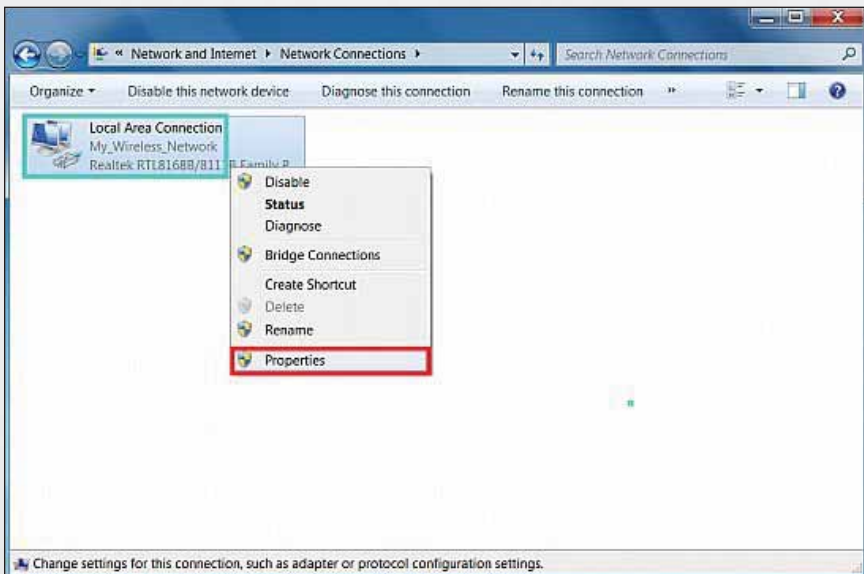


Verizon High Speed Internet for Business

Step 3 Click on “Change adapter settings”



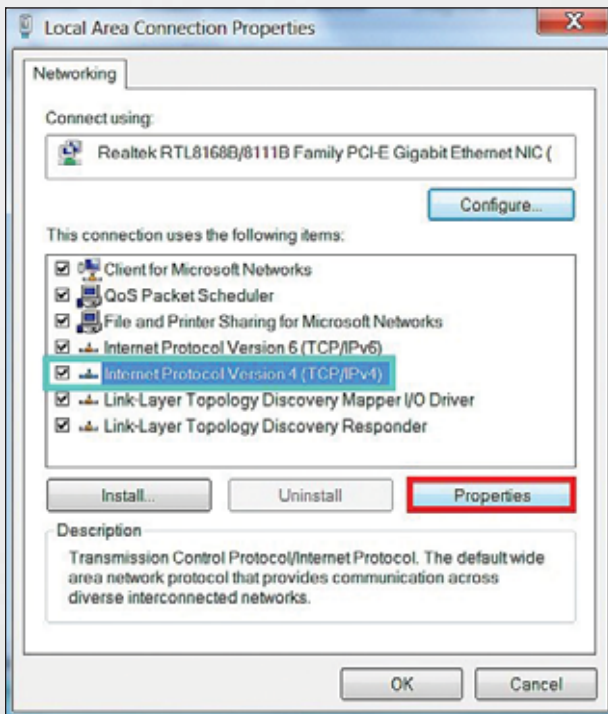
Step 4 Right click on the “Local Area Connection” in the network adapters list and select “Properties”



Step 5 The Networking tab is displayed.

NOTE: It is ok for Internet Protocol Version 6 (TCP/IPv6) to be checked. There is no need to provision the settings as this protocol is not supported.

Single left click on “Internet Protocol Version 4 (TCP/IPv4)” and then click “Properties” just below it to the right.



Verizon High Speed Internet for Business

Step 6 The General tab is displayed.

NOTE: Do not use the IP addresses shown in the screen shots. These are examples only and will not work for you.

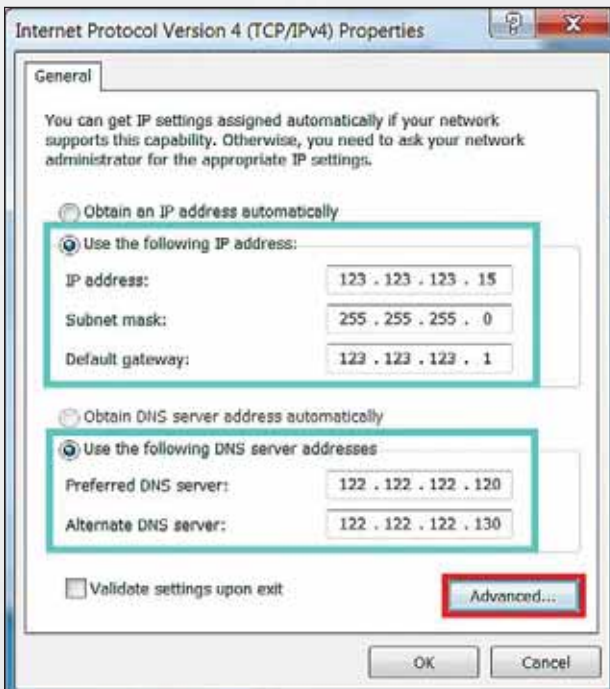
Set the first radio button to Use the following IP address.

You may now enter the Verizon provided Static IP, Subnet Mask, and Default Gateway.

Set the second radio button to Use the following DNS server addresses.

You may now enter the Verizon provided DNS server addresses.

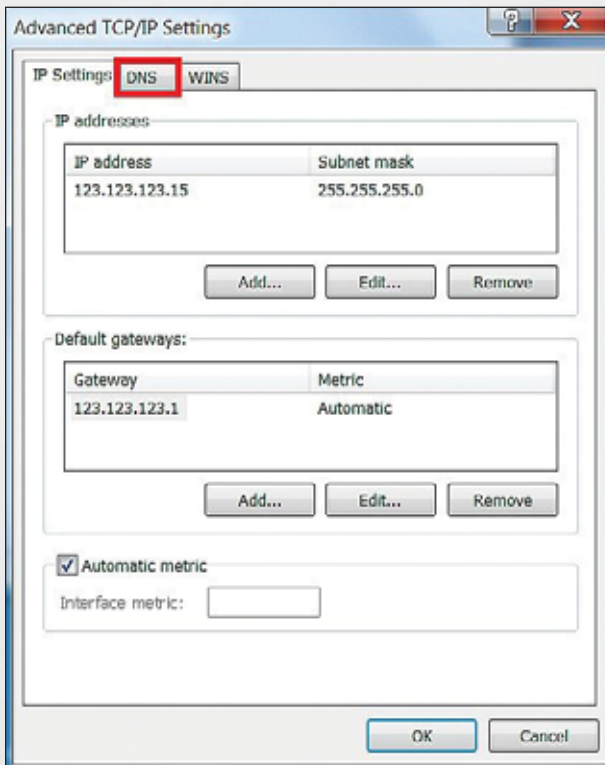
Click the “Advanced” button



Step 7 The IP Settings tab is displayed.

All default options should be selected as shown in the image here.
IP address should show the static IP you entered.

Click on the “DNS” tab.

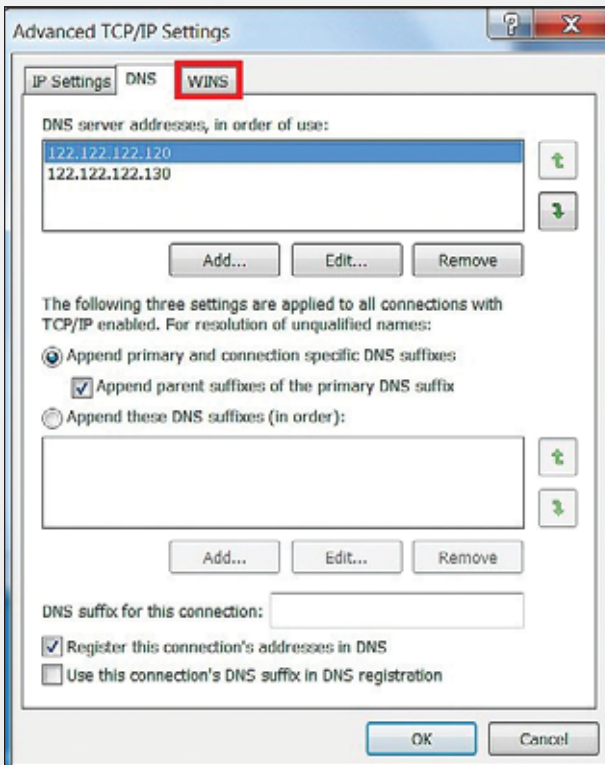


Verizon High Speed Internet for Business

Step 8 The DNS tab is displayed.

All default options should be selected as shown in the image here. You should see the DNS servers you entered in the DNS server addresses, in order of use: box.

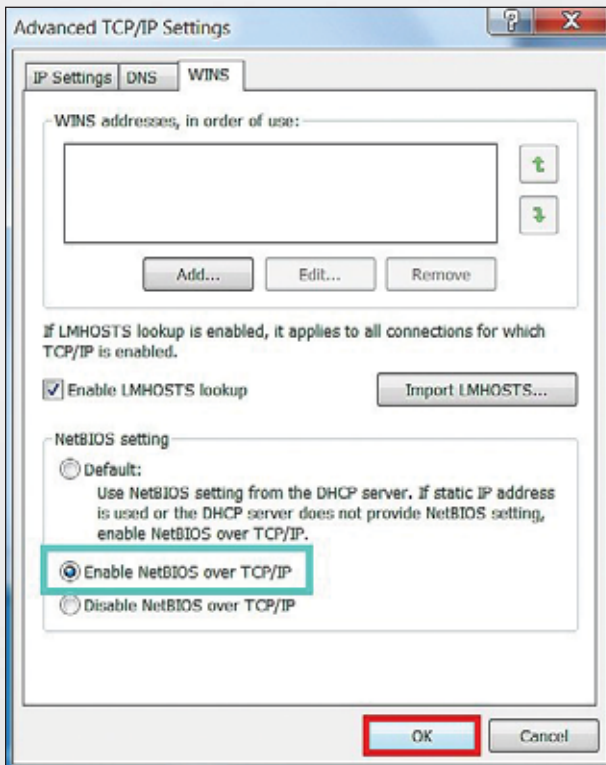
Click on the “WINS” tab.



Step 9 The WINS tab is displayed.

All default options should be selected as shown in the image here. NetBIOS should be set to Enable for Static IP connections.

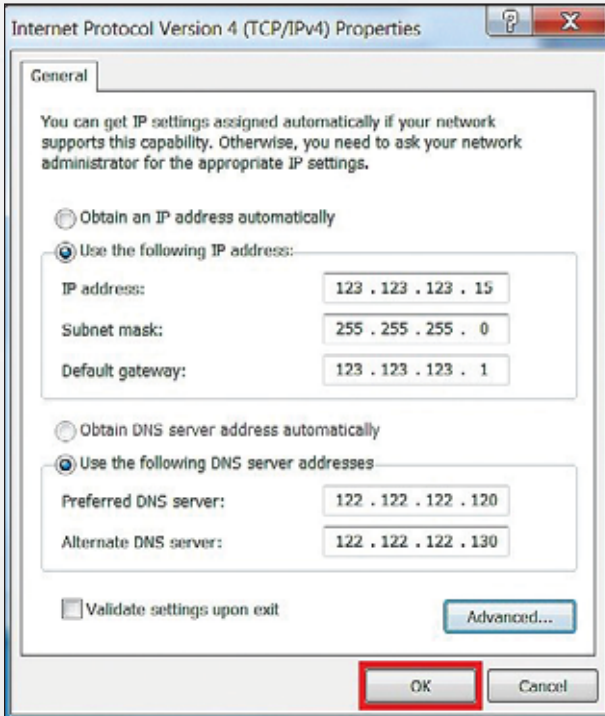
Click “OK”.



Verizon High Speed Internet for Business

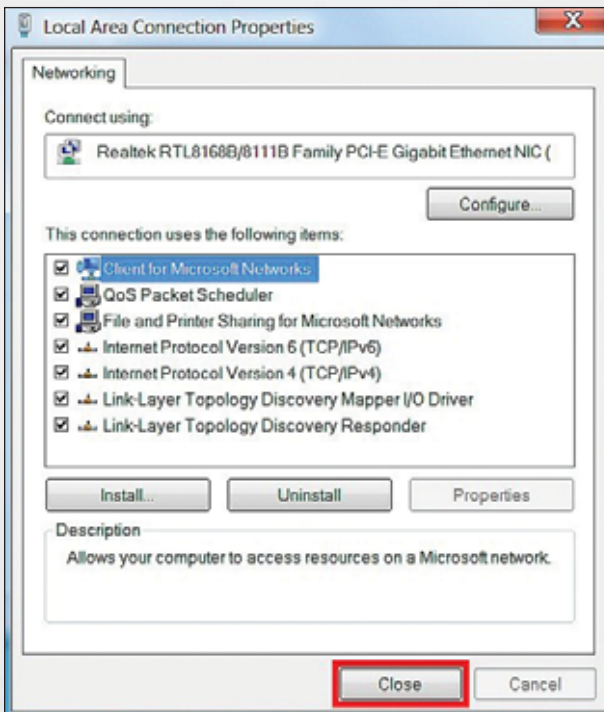
Step 10 You are returned to the General tab.

Click "OK".



Step 11 You are returned to the Networking tab.

Click “Close”. There will be a brief pause while Windows sets the static IP you entered.

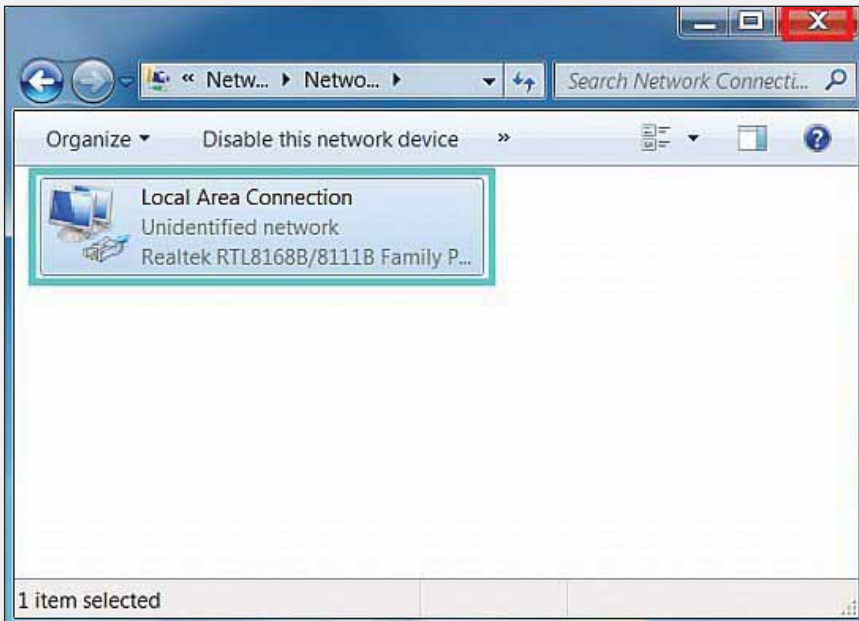


Verizon High Speed Internet for Business

Step 12 You are returned to the Network Adapters window.

You may now close the window by clicking the red X in the top right corner.

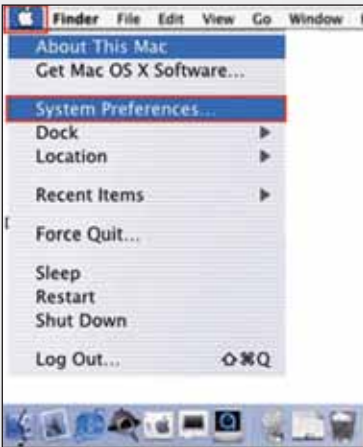
You should now be able to surf the Internet.



SECTION 3 (con't)

MAC® OS X 10.4 OPERATING SYSTEM CONFIGURATION

Step 1 First click the Apple, Select Location, then click “System Preferences”.



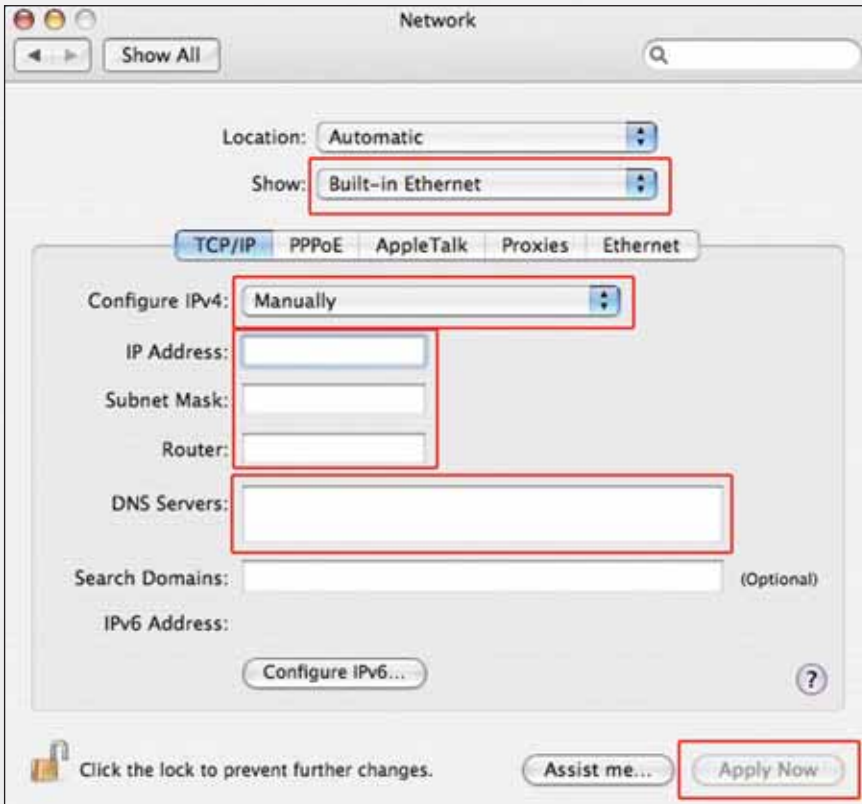
Step 2 System Preferences window opens. Click “Network” on the top menu.



NEED HELP? Call our Business Support Team at 1.888.649.9500

Verizon High Speed Internet for Business

Step 3 The Network window opens. Select Built-in Ethernet in the show field. Select Manually in the Configure IPv4 field.



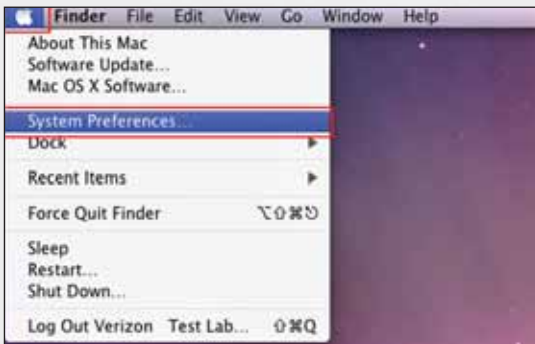
Step 4 Enter your Static IP Address and Subnet Mask (found in your Verizon Service Activation Email). Click on the Router field and enter your Default Gateway Address (found in your Verizon Service Activation Email). Click on the Domain Name Servers textbox and enter the DNS1 and DNS 2 Server Addresses (found in your Verizon Service Activation Email). Click "Apply Now".

Step 5 Open the browser and test your Internet connection by going to **verizon.com/mybusiness** to learn about Verizon email, web hosting and where to get additional Verizon High Speed Internet support.

SECTION 3 (con't)

MAC® OS X 10.5 OPERATING SYSTEM CONFIGURATION

Step 1 First click the Apple, Select Location, then click “System Preferences”.



Step 2 System Preferences window opens. Click “Network” on the top menu.



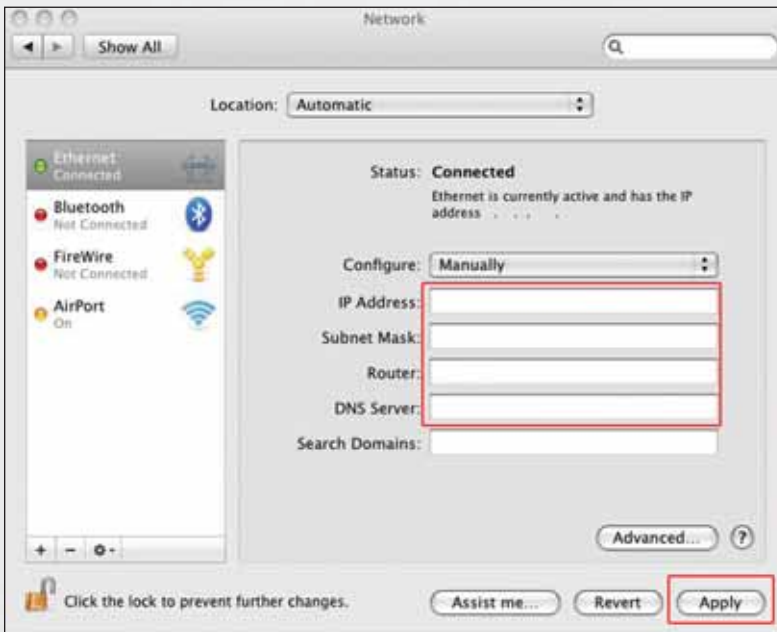
NEED HELP? Call our Business Support Team at 1.888.649.9500

Verizon High Speed Internet for Business

Step 3 The Network window opens. In the dropdown menu labeled Configure, select Manually.



Step 4 Enter your Static IP Address and Subnet Mask (found in your Verizon Service Activation Email). Click on the Router field and enter your Default Gateway Address (found in your Verizon Service Activation Email). Click on the Domain Name Servers text box and enter the DNS1 and DNS 2 Server Addresses Server Addresses separated by a comma and a space (found in your Verizon Service Activation Email). Click “Apply”.



Step 5 Open the browser and test your Internet connection by going to verizon.com/mybusiness to learn about Verizon email, web hosting and where to get additional Verizon High Speed Internet support.

SECTION 4

TROUBLESHOOTING: IF YOUR INTERNET CONNECTION IS NOT WORKING

If your connection is not working, here are some simple things you can try:

- Restart your computer.
- Check your Static IP setting; make sure the IP addresses are Correct and in proper position.
- If your connection is still not working, please call our Business Support Team at 1.888.649.9500, choose the option for Installation Support to verify that your Static IP is available.

